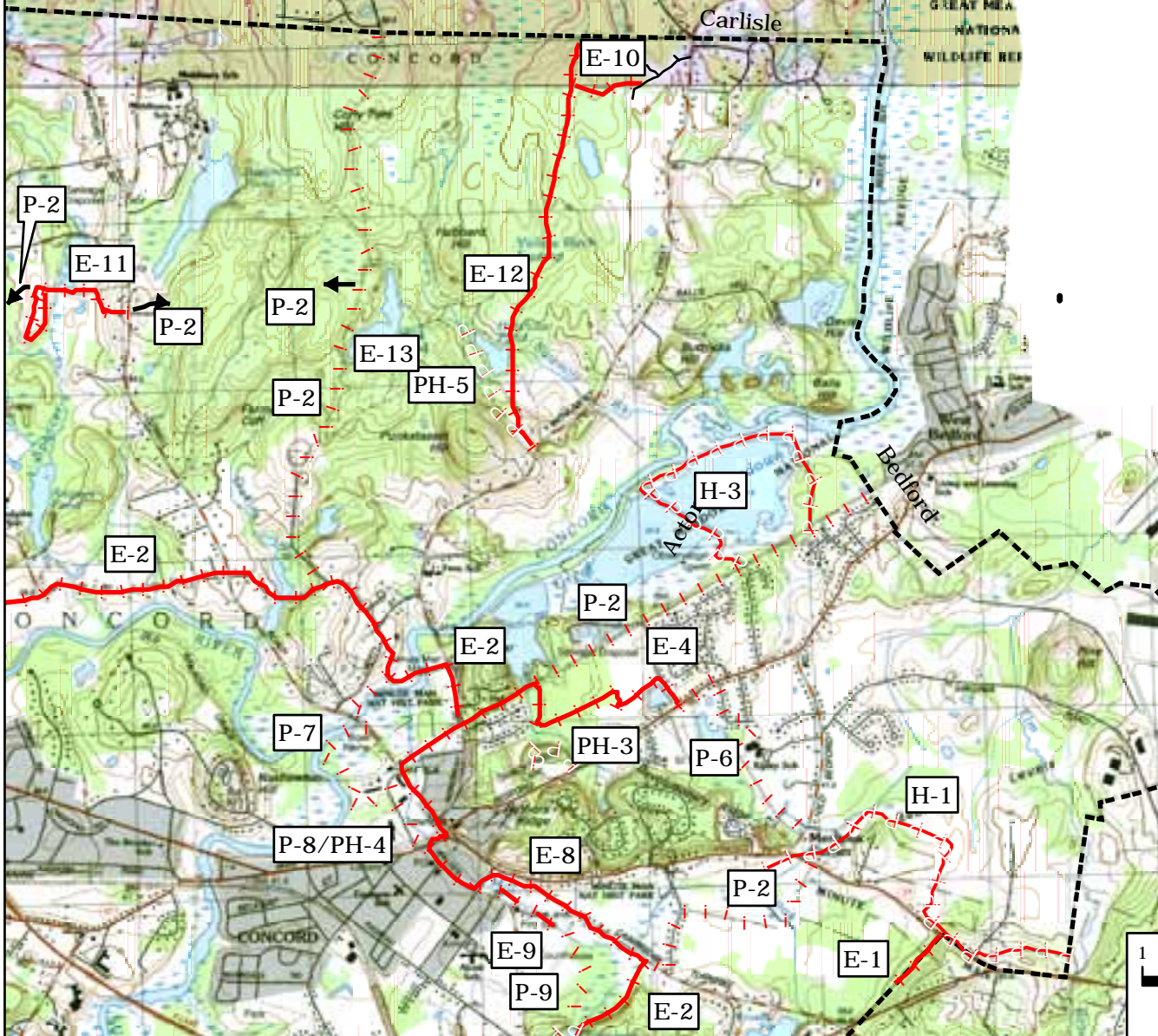


# Public Trails & Handicap Accessible Trails: Northeast



## E. Existing public trails

1. Oxbridge Trail
2. Bay Circuit Trail (Regional)
3. Bigelow Field Trail
4. Colonial Militia Trail (Part 1)
5. Deaconess Well Trail to Mattison Field
6. Fairhaven Trail/Wright Woods Trails
7. Hosmer Land Trail
8. Mill Brook Trail at Heywood Meadow
9. Mill Brook Trail behind Courthouse (primitive)
10. Monument Farm/Two Rod Road Trail
11. Spencer Brook Trail/Newbury Land
12. Two Rod Road (Harvard)
13. Estabrook Road Trail (Harvard)
14. Walek-Dorvel Trail

## P. Proposed new or re-routed public trails

1. Assabet-Nashoba Trail
2. Bay Circuit Trail (re-routings) [shown in part; exact routes to be determined]
3. Brister's Hill Trails
4. Bruce Freeman Rail Trail (Regional)
5. Capped Landfill Trails
6. Colonial Militia Trail (Part 2)
7. Heywood Meadow to North Bridge Trail
8. Old Mill Crossing
9. Thoreau-Emerson Trail

## H. Existing purportedly handicap accessible trails

1. Battle Road Trail (Regional)
2. Chamberlin Path
3. Dike Trail, Great Meadows Wildlife Refuge
4. Walden Pond Beach Walkway, Walden Pond State Reservation (somewhat accessible)

## PH. Proposed handicap accessible trails

1. Assabet-Nashoba Trail
2. Brister's Hill and Capped Landfill Trails
3. Hillside Avenue, Sleepy Hollow Cemetery
4. Old Mill Crossing
5. Punkatasset Trail
6. Town Forest Trail to Fairyland Pond

